

HARDSTOP™ DECORATIVE PROTECTION PANELS BY FORMICA GROUP



HARDSTOP™ SPRAY ADHESIVE INSTALLATION GUIDE

HARDSTOP™ SPRAY ADHESIVE

HardStop™ Spray Adhesive is for application on raw drywall or painted drywall with the prep outlined below.

Refer to the Safety Data sheet for HardStop™ Spray Adhesive and HardStop™ Spray Adhesive Reactivator for safety requirements and storage requirements.

PAINTED DRYWALL AND GYPSUM BOARD:

The surface must be flat. All glossy, epoxy coated painted surfaces must be roughed up with coarse 100 grit sandpaper to ensure the exposure of clean drywall. You may also use a wallpaper surface perforating tool. **Be sure to clean the surface after abrading to remove all loose particulates and dirt and use the recommended adhesive.** Be careful not to abrade through the drywall's face paper; only rough up the painted or primed surface to expose the drywall surface paper.

NON-PAINTED DRYWALL AND GYPSUM BOARD:

The surface must be flat. Finish only the tapered joints and corners so they are flat. Do not finish, prime or paint the entire surface of new drywall or gypsum. If the area needs to be evened out, you may use joint compound. Any high or low spots will create a poorly finished wall and yield a poor bond. **Make sure all dust and particulates are removed when finished prior to applying the spray adhesive to the drywall.**



It may be advisable to mask off the area to get the adhesive applied until you are good at application of the spray adhesive.



There are hand held paint paddles that control over spray. These may be used to help with application of the spray adhesive.



TOOLS AND MATERIAL NEEDED:

- HardStop™ Spray Adhesive
- HardStop™ Spray Adhesive Reactivator to remove adhesive from the HardStop™ Panels when installed. **NOTE:** for other surfaces check in an inconspicuous location to ensure the reactivator does not harm the surface or molding
- HardStop™ Decorative Protection Panels by Formica Group
- Canister of adhesive with hand gun for application
- Adjustable wrench for connecting the hose and gun to the canister
- Paint paddle
- Use PPE whenever cutting or drilling panels

INSTALLATION INSTRUCTIONS:

1. Dry fit the panel to confirm it is plumb and level.
2. Use painters tape or an overspray paddle to protect any areas outside of the gluing area from overspray.
3. Use a wrench to attach the gun and hose to the canister.



4. Open the valve on the top of the canister completely. You will leave this valve open until the canister is empty.



5. Check for any leaks, and tighten the connection if needed.



Adjust the gun trigger control to your desired spray pattern.

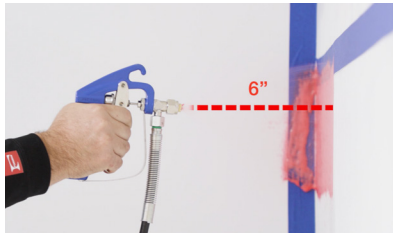


HARDSTOP™ DECORATIVE PROTECTION PANELS BY FORMICA GROUP



HARDSTOP™ SPRAY ADHESIVE INSTALLATION GUIDE

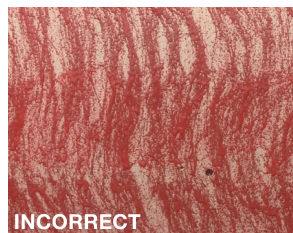
6. Apply HardStop™ Spray Adhesive using the included hand gun sprayer to the face of the drywall only. **Do not apply spray adhesive to the HardStop™ Panels.**
7. Using a 'painter's technique' hold the spray gun at a right angle from the substrate to avoid variations in the spray weight, approximately 6" from the wall.



8. Spray the adhesive approximately 3" past the plumb line, releasing the spray trigger at the end of every spray pass to avoid adhesive build up.



9. It is important to recognize that this adhesive coverage is different than what you might be used to. Generous adhesive coverage is required so that it is wet enough to adjust the panel when applying.
10. Apply the adhesive as per the color pictures below showing the correct amount of adhesive applied to the drywall. Always check adhesion by applying HardStop™ Spray Adhesive to a test area.



11. Install the HardStop™ Panel to the wall, remembering to leave a gap between the HardStop™ Panel and the floor.



12. **You will have only one minute to position the HardStop™ Panel before the adhesive holds the HardStop™ down. If too little adhesive is applied, the sheet will not move, or will be difficult to move when trying to position the sheet.**

13. Once the HardStop™ Panel is in place, install the next trim piece immediately, while the adhesive is still wet. Slide the trim underneath the edge of the HardStop™ Panel.



Check to make sure it's plumb, then use a pneumatic nailer to put 16-18 gauge, 1" nails into the flange of the trim.



Roll the entire area with firm pressure using a 3" J-Roller.



14. Clean any extra adhesive off the face of the HardStop™ Panel with HardStop™ Spray Adhesive Reactivator, before the adhesive dries. Clean all adhesive off the face of the HardStop™ Panel and moldings as needed. Come back and re-roll the entire area in one hour.
15. If installing wainscoting, install the top cap and start on one side of the room. Move from left to right to install the rest of the room. Install the division bars and corner moldings as you install each panel. Remember to clean each panel and molding as installed.



HARDSTOP™ DECORATIVE PROTECTION PANELS BY FORMICA GROUP



HARDSTOP™ SPRAY ADHESIVE INSTALLATION GUIDE

16. Install drywall screws through the bottom of the panel in a location that will be covered by the baseboard. This will support the panel until the adhesive dries.



17. Formica Group recommends oversized holes whenever drilling into HardStop™ Panels. A twist drill bit and low profile washer head screws work well.



18. To install the next panel, start by using painters tape to protect the HardStop™ trim from adhesive and adhesive reactivator overspray.
19. Measure over from the trim to establish the plumb line for the next panel.



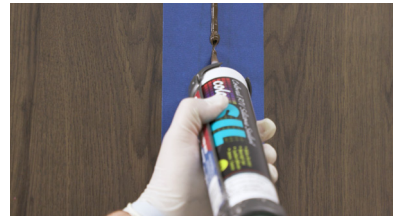
20. Starting at the glue line from the first panel, continue the adhesive spray 3" past the next plumb line. Be careful not to spray on top of the adhesive from the first panel. Adhesive build up can cause panels to be uneven at the final installation.
21. Then using the HardStop™ Spray Adhesive Reactivator, generously spray over the previous panel glue to reactivate it.



Remove the painters tape from the trim and install the next HardStop™ Panel by sliding it into the trim.

22. **Remember, you will have only one minute to position the HardStop™ panel before the adhesive holds the HardStop™ down.**

23. Continue to follow all appropriate steps to install HardStop™ Panels down the length of the wall.
24. Allow the adhesive to dry for one hour, then return and firmly reroll the entire area with a 3" j-roller.
25. If you aren't using division bars in between panels, refer to page 8 for use of color-matched 100 percent silicone caulk from ColorRite.



26. Remove the painters tape, and again, clean any excess caulk off the face of the HardStop™ Panel.
27. Remove the drywall screws and install the baseboard following the baseboard manufacturer's instructions.
28. If there are any outlets, or other openings in the wall – cut them out at this time.
29. For all other installations, please refer to the HardStop™ Installation guidelines at the front of this guide

ADHESIVE CANISTER DISPOSAL GUIDELINES:

- When canister is completely empty remove hose from canister, open valve and allow residue in canister to dry.
- Punch hole in canister with brass punch.
- Discard, recycle or return (177# and 355# are returnable) canister (contact your distributor for return details)

HARDSTOP™ DECORATIVE PROTECTION PANELS BY FORMICA GROUP



TECHNICAL GUIDE, USE & CARE, WARRANTY, AND INSTALLATION GUIDE

LIMITED WARRANTY

Formica Corporation expressly warrants that, for a period of (1) one year from the date of first sale, this product will be reasonably free of defects in materials and workmanship, and that when properly stored, handled, fabricated and installed, will conform, within accepted tolerance, to applicable manufacturing specifications. Colors are subject to dye lot variations. DUE TO THE VARIETY OF USES AND APPLICATIONS TO WHICH HARDSTOP™ PANELS MAY BE PUT, FORMICA CORPORATION MAKES NO WARRANTY THAT THIS PRODUCT IS SUITABLE FOR ANY PARTICULAR PURPOSE AND MAKES NO OTHER WARRANTIES, EXPRESSED OR IMPLIED, OTHER THAN THOSE SET FORTH ABOVE.

DISCLAIMER OF WARRANTIES:

THE WARRANTIES SET FORTH HEREIN OR IN FORMICA CORPORATION'S WARRANTY DOCUMENTS WITH RESPECT TO A PRODUCT ARE THE ONLY WARRANTIES MADE BY FORMICA CORPORATION IN CONNECTION WITH THESE PRODUCTS, AND ARE EXPRESSLY IN LIEU OF ANY OTHER WARRANTIES, EXPRESS OR IMPLIED, INCLUDING WITHOUT LIMITATION, ANY WARRANTY OF MERCHANTABILITY OR FITNESS FOR A PARTICULAR PURPOSE. PRODUCTS SOLD BY FORMICA CORPORATION ARE SUBJECT ONLY TO THE WRITTEN SPECIFICATION. FORMICA CORPORATION'S SOLE OBLIGATION FOR A REMEDY TO BUYER SHALL BE, REPAIR OR REPLACEMENT TO NON-CONFORMING PRODUCTS, OR AT THE OPTION OF FORMICA CORPORATION, RETURN OF THE PRODUCT AND REFUND OF THE PURCHASE PRICE. BUYER ASSUMES ALL RISK WHATSOEVER AS TO THE RESULT OF THE USE OF THE PRODUCTS PURCHASED, WHETHER USED SINGLY OR IN COMBINATION WITH OTHER MATERIALS.

LIMITATION OF LIABILITY:

No claim by buyer of any kind, including claims for indemnification, whether as to quality or amount of products delivered or for non-delivery of products, shall be greater in amount than the purchase price of the products in respect of which damages are claimed. IN NO EVENT SHALL FORMICA CORPORATION BE LIABLE TO BUYER FOR ANY SPECIAL, INDIRECT, INCIDENTAL, RELIANCE, EXEMPLARY, OR CONSEQUENTIAL DAMAGES OR COVER, OR LOSS OF PROFIT, REVENUE OR USE, IN CONNECTION WITH, ARISING OUT OF, OR AS A RESULT OF, THE SALE, DELIVERY, SERVICING, USE OR LOSS OF USE OF THE PRODUCTS SOLD HEREUNDER, OR FOR ANY LIABILITY OF BUYER TO ANY THIRD PARTY WITH RESPECT THERETO. BUYER SHALL INSPECT FOR NONCONFORMITY PROMPTLY UPON RECEIPT. Failure by buyer to give Formica Corporation written notice of claim within 30 days from date of delivery or, in the case of non-delivery from the date fixed for delivery, shall constitute a waiver by buyer of all claims in respect of such products.

MANUFACTURER

Formica Corporation
10155 Reading Road
Cincinnati, Ohio 45241-5279

TECHNICAL SERVICES

Technical assistance may be obtained through your local Formica® Brand Products Distributor or from Formica Corporation trained representatives in sales offices throughout the country. To assist these representatives, Formica Corporation maintains a sales and technical services staff in Cincinnati, Ohio. For technical assistance, contact your distributor or sales representative; write the company directly at Formica Corporation Technical Services Department, 10155 Reading Road, Cincinnati, OH, 45241; call (513) 786-3578 or 1-800-FORMICA™; or fax (513) 786-3195. In Canada, call 1-800-363-1405. In Mexico, call (55) 5634-8620.

TRADEMARKS:

Formica, the Formica Anvil logo and ColorCore are registered trademarks of The Diller Corporation. 1-800-FORMICA, ZIP-CHIP and HardStop are trademarks of The Diller Corporation. The products and manufacturing processes of Formica Corporation are protected under U.S. and foreign patents.

Scotch-Brite® is a registered trademark of 3M Company.

Fantastik® is a registered trademark of DowBrands Inc.

Simple Green® is a registered trademark of Sunshine Maker's, Inc

Formula 409® and PineSol® are registered trademarks of The Clorox Company.

Mercurochrome® is a licensed trademark of Beckton Dickson.

HardieBacker® is a registered trademark of James Hardie Industries plc.

Titebond® and GreenChoice™ are registered trademarks of Franklin International

Amana Tool® is a registered trademark of Amana Tool Corporation.

ColorRite™ is a pending trademark of Color Rite, Inc.

Meditate® FR is a registered trademark of © Roseburg

All ® brands are registered trademarks of the respective owners.

All ™ brands are trademarks of the respective owners.

©2019 Formica Corporation
Cincinnati, Ohio 45241
Printed in the USA