

ABOUT ATLANTIC PLYWOOD

Atlantic Plywood Corporation is the leading wholesale supplier of quality lumber and hardwood panel products on the East Coast. We provide an unparalleled selection of plywood and related building products to a variety of woodworking industries – from architectural millworkers and countertop manufacturers to cabinet-makers, kitchen and bath companies and point-of-purchase fixture manufacturers. Our goal is to provide large and small woodworkers with service, inventory, and knowledge from one source at a competitive price. We have worked toward this goal for over 40 years with a dedication to expanding our selection and services while utilizing the latest technologies to deliver the best in customer service.

As our many satisfied customers have come to know, Atlantic Plywood offers not only products and services you can depend on, but also a convenient, cost-effective partnership that will help your business grow. In January, 2018, Atlantic Plywood became a wholly owned subsidiary of Parksite, Inc.

Table of Contents

02	ABOUT US	04	APC LUMBER PROGRAM
06	CORE STOCK SKUs Hardwood boards, always available	08	ATLANTIC ADVANTAGES
09	S4S STOCK Save time away from milling with these common species and dimensions	10	THERMALLY MODIFIED LUMBER Exterior-ready, environmentally friendly
12	EASTERN WHITE PINE	13	SPECIALTY ITEMS Wide dimension species offering
14	SPECIALTY ITEMS Exotic species offering	15	THE APC DIFFERENCE



Our Lumber Product Managers:

Joe Yvon

339.223.2025

jyvon@atlanticplywood.com

Roger Feltner

585.353.0146

rfeltner@atlanticplywood.com



The APC Lumber Promise



HIGH QUALITY

All of our domestic lumber is sourced directly from sawmills.



KILN DRIED

All of our lumber is kiln dried to 6–8% moisture content.



NET TALLY

We sell on a **NET TALLY**. The lumber is measured after kiln drying with **NO** addition of footage for kiln drying shrinkage. This means you get what you pay for.



OUR LUMBER PRODUCTS

We offer a wide selection of species and dimensions to ensure your needs are met in one stop. From rough-sawn to surfaced and straight line ripped one edge, we have the quality boards you're looking for at a fair price.



100' BUNDLES

Our lumber minimums are as low as 100 board feet.

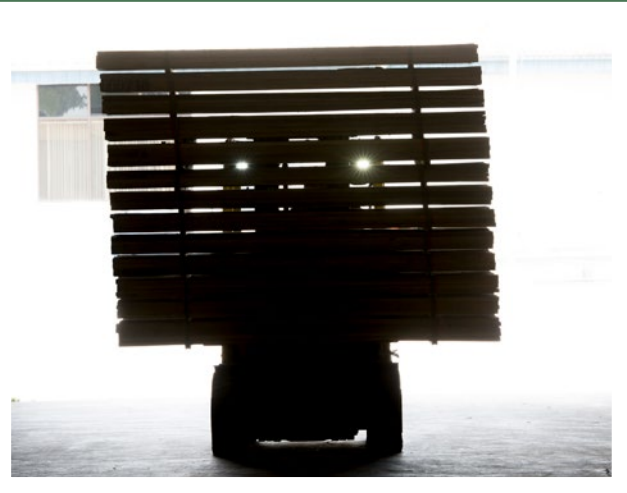
CORE STOCKING LUMBER INVENTORY

4/4 ROUGH AND 13/16" S2S RIPPED ONE EDGE

ANY BRANCH, ALWAYS AVAILABLE
Our Promise to You.

With over 45 years of experience supplying the Northeast's finest furniture and cabinet makers, we understand your needs: a reliable, quality supply of lumber to keep production moving and customers happy.

Atlantic Plywood maintains inventory of eight core species in 100' board packs so whenever the job comes, or the deadline moves up, we can fulfill it - both in 4/4 stock and 13/16" straight line ripped, one edge to save you milling time. The most requested species for face frames, trim, cabinet and furniture jobs are just a call away.



8 different
species



2 surface
options



10 ft.
lengths

100 board foot minimums

Super Prime

Cherry (Heart/Red)
90% 1 face, 70% reverse face
Guaranteed for Red

4/4 Rough: 83100-100-10
13/16 Straight Line Rip 1 Edge: 83000-100-10

Prime

Hard Maple
Guaranteed Sap (white) 1 face and better

4/4 Rough: 84020-100-10
13/16 Straight Line Rip 1 Edge: 84000-100-10

Prime

Poplar
Even but diffuse grain pattern

4/4 Rough: 85000-100-10
13/16 Straight Line Rip 1 Edge: 85400-100-10

Prime

Red Oak
Characteristic ring porous grain pattern

4/4 Rough: 86100-100-10
13/16 Straight Line Rip 1 Edge: 86000-100-10

Prime

Soft Maple
Guaranteed Sap (white) 1 face and better

4/4 Rough: 84400-100-10
13/16 Straight Line Rip 1 Edge: 84450SLR-100-10

Paint Grade Soft Maple
Soft Maple with possible brown and red streaks hide when painted. Unselected for color.

4/4 Rough: 84502-100-10
13/16 Straight Line Rip 1 Edge: 84503-100-10

Superior*

Walnut
Proprietary grade. Reduced side bend and includes restrictions on splits

4/4 Rough: 89050-100-10
13/16 Straight Line Rip 1 Edge: 89007-100-10

Prime

White Oak
Pronounced rays and strong grain patterns

4/4 Rough: 87000-100-10
13/16 Straight Line Rip 1 Edge: 87500-100-10



*Red Oak & White Oak Grading Rules

*Visual representation only. Actual colors, patterns, and faces may vary.

ATLANTIC ADVANTAGES

EXCEPTIONAL QUALITY IN ALL DIMENSIONS

From 4/4–12/4; 8', 10', 12' & 16' lengths; Wide-sorts and more!

Don't see it? Just ask. While we guarantee to have standard materials in stock, our relationships with the most premier and prominent mills in the Northeast gives us the flexibility to source and supply any species, in any dimensions. Rough or dressed, standard thickness, and wide sorts, just let us know!



CUSTOMER STOCKED MILL PACKS

Stock availability - designed for your specific needs!

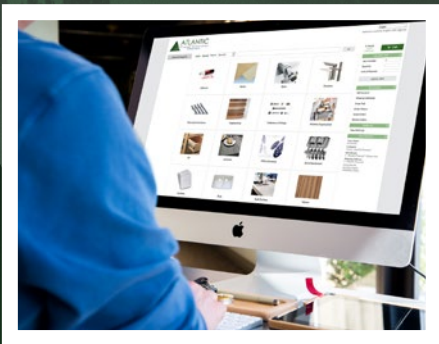
Nothing can stop a project or production line like a disruption in the availability of raw materials. We strive to be the industry's best in forecasting inventory based on what our customers may need on an order-to-order basis. Beyond that, we are happy to work out flexible and/or scheduled inventory mill packs, ensuring we always have the necessary lumber items on hand, just for you.



EVERYTHING YOU NEED – ALL IN ONE PLACE

We're more than just great lumber!

In addition to all your hard and softwood lumber needs, Atlantic Plywood is the Northeast's premier distributor of panel products, laminates, finishes, hardware, consumables, and more. Anything and everything you may need to complete your job can be ordered from one supplier and delivered quickly to exponentially accelerate your project timelines.



*Ask about
our eStore*

**Have a question?
Need a scheduled and/or consistent
supply of a certain species?**



Our Lumber Product Managers:

Joe Yvon: 339.223.2025 or jyvon@atlanticplywood.com
Roger Feltner: 585.353.0146 or rfeltner@atlanticplywood.com

S4S STOCKED LUMBER

MOST COMMON SPECIES TO HELP SPEED UP YOUR PRODUCTIONS

We stock many of the most widely utilized species, already surfaced on 4 sides to keep your shop running. Available in standard dimensions and up to 16' lengths, Atlantic can supply high-quality, S4S dimensional boards when the time to mill it yourself is simply not in the schedule.



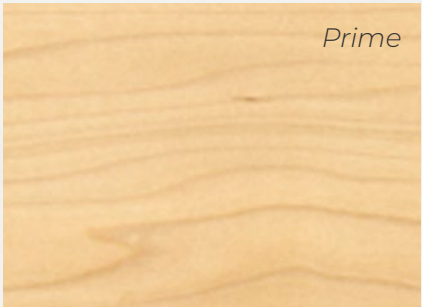
Prime

Yellow Poplar

Extremely workable by machine and hand tools, Yellow Poplar is utilized for dimension stock, mill work, frame and cabinet parts.

Stocked Dimensions:

1x4 | 1x6 | 1x8



Prime

Hard Maple

Strong, hard and high in it's nail-holding ability, Hard Maple is the industry choice for furniture, cabinets, architectural millwork and more.

Stocked Dimensions:

1x4 | 1x6 | 1x8



Prime

Red Oak

Machinable and takes stain beautifully, Red Oak is a popular choice for kitchen cabinets, architectural panels and flooring.

Stocked Dimensions:

1x4 | 1x6 | 1x8



Prime

Soft Maple

Not as stiff or shock resistant as hard maple, Soft Maple takes paint well and is capable of high polish for cabinets and furniture.

Stocked Dimensions:

1x4 | 1x6 | 1x8 | 1x10

*Other dimensions available upon request.
Just ask!*

THERMALLY MODIFIED LUMBER

Thermally modified lumber, typically lighter species like ash, poplar, or maple, is traditional lumber that has been through a natural, non-toxic process that “cooks” the wood, changing the make-up of the wood. Wood is heated in 400+ degree heat in an oxygen-free environment. Thermal modification uses heat to remove organic compounds from the wood cells, so it will not absorb water, expand, contract, or provide nourishment for insects or fungi.

Thermally modified lumber is ideal for siding, decking, architectural millwork, cabinetry, furniture, flooring, paneling, trim, and much more. It is available in a variety of lengths and thicknesses, rough or surfaced, random width, pulled width, or ripped to width. Our Lumber Specialists are available to source whatever you need for your projects.

AVAILABLE THERMALLY MODIFIED SPECIES AND DIMENSIONS

ASH*	4/4	5/4	6/4	8/4
RED OAK	4/4	5/4	6/4	8/4
SOFT MAPLE	4/4	5/4	6/4	8/4
YELLOW POPLAR	4/4	5/4	6/4	8/4



DECAY RESISTANT

No longer contains sufficient nutrients to support insect infestation or fungal attack.



LIGHTWEIGHT

No chemicals used or absorbed, only moisture removed making the wood lighter.



DIMENSIONALLY STABLE

Less susceptible to cupping and warping with changes in relative humidity.



AESTHETICALLY PLEASING

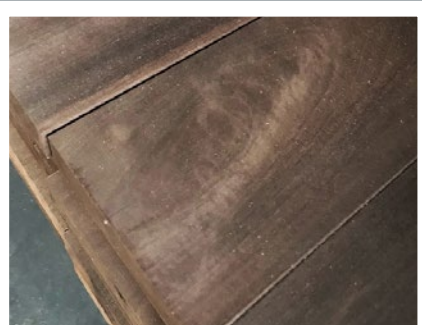
The heat process gives lighter colored wood a rich, deep brown appearance giving it an unexpected tropical look.



DURABLE

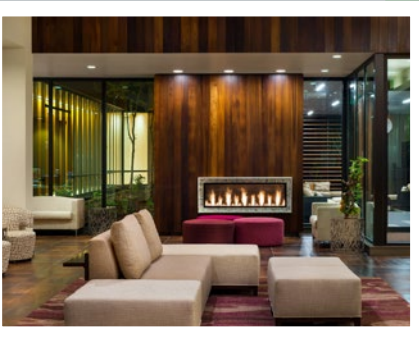
When maintained properly, it will not chip, rot or warp over the years.

* future supply limited



WOOD. MADE BETTER.

Thermally modified lumber is an environmentally responsible choice over tropical hardwoods or petrochemical-based wood alternatives.



CUSTOM USES.

Thermally Modified Poplar and Ash lumber for architectural millwork as well as flooring, furniture and musical instrument production. Cambia's outstanding dimensional stability and deep rich color tones enhance any interior hardwood application.

EASTERN WHITE PINE BOARDS

A NORTH AMERICAN STANDARD

The combination of a straight-grained board with an even, medium texture and it's acceptance of glue and ease of workability make EWP the king of softwoods for cabinet making, interior millwork, furniture and more.



D Select and BTR

Used for natural or stained finish applications, fine woodworking or interior trim, D Select and BTR allows pin knots <1/2" and limits the total to 1 per board foot.

Stocked Dimensions:
4/4 | 5/4 | 6/4 | 8/4



Premium Grade

Premium grade is a good appearance knotty grade used in the same applications as above where larger and more numerous characteristics are desired.

Stocked Dimensions:
1x4 | 1x6 | 1x8 | 1x10
1x8 Tongue and Groove



Standard / Furniture

Furniture grade pine is great for interior millwork and furniture bracing. Glues and finishes well. Allows for knots sized from pin to 2" and 85% knot free.

Stocked Dimensions:
4/4 | 6/4 | 8/4

*Other grades and dimensions available upon request.
Just ask!*

WIDE SORTS AVAILABLE LUMBER

There will always be jobs where there are no substitute for the look and quality of a wide, solid wood glue-up. From farmhouse table tops to kitchen islands and beyond, Atlantic Plywood stocks a variety of wide-plank hard- and softwood boards to help complete those wide scale, solid wood applications.



4/4 Red Oak
10" and Wider Planks



5/4 Red Oak
10" and Wider Planks



4/4 Hard Maple
10" and Wider Planks



4/4 Soft Maple
10" and Wider Planks



4/4 Yellow Poplar
9" – 15" Wide Planks



4/4 Rustic Hickory
7-8" Wide Planks

COMMONLY STOCKED EXOTICS

In addition to the breadth of traditional hard- and softwood products we keep on-hand for our customers, we also carry more exotic hardwood species in multiple dimensions for those special jobs where luxurious looks and premium quality are desired.



Sapele

The perfect substitution for mahogany, Sapele exceeds at interior and exterior uses like cabinets, furniture & boat-building.

Stocked Dimensions: 4/4 | 5/4 | 6/4 | 8/4



Red Grandis

Certiably green, Red Grandis is a wonderful alternative to mahogany and sapele.

Stocked Dimensions: 4/4 | 5/4 | 6/4 | 8/4



Genuine Mahogany

Exceptionally clear in appearance and among the best in stability, Mahogany is one of the best for cabinet making.

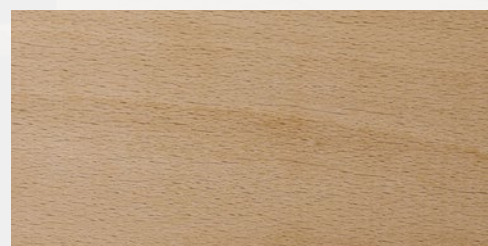
Stocked Dimensions: 4/4 | 5/4 | 6/4 | 8/4



Teak

Durable, water- and rot resistant, Teak is a highly sought after hardwood for its beautiful appearance & high durability.

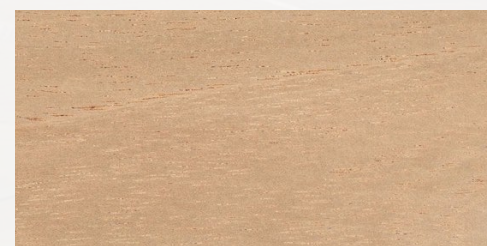
Stocked Dimensions: 4/4 | 5/4 | 6/4 | 8/4



European Beech

Moderately hard with straight grain and great strength. Works well with both machine and hand tools.

Stocked Dimensions: 4/4 | 5/4 | 6/4 | 8/4



Spanish Cedar

From furniture building to closet linings SC's clear even-colored grain and light appearance make it a desired species.

Stocked Dimensions: 4/4 | 5/4 | 6/4 | 8/4

Other species, dimensions, and sizes available upon request. Just ask!



WHY ATLANTIC PLYWOOD?

HIGHEST QUALITY BOARDS –

Quality boards and fair prices.

We never sell cheaper grades as high quality. We deal with the mills directly which allows us to stand by our product, while small and dedicated enough to still advocate for our customers.

EXPEDITED DELIVERY

No waiting for delivery forecasts, we're in your area!

As an established, efficient & agile distribution company, we are more often than not in your area twice a week delivering high-quality panels and plywood products, laminates, hardware, lumber and shop supplies.

CUSTOMER STOCKED MILL PACKS

Need a steady supply of a certain species? We've got you covered!

We'll happily negotiate and stock mill packs of species for those customers who require a consistent, quality supply of lumber to keep their shop efficiency and productivity high. Just contact our Lumber Product Managers to discuss!



OUR LOCATIONS

Albany, NY

NE Industrial Park
Altamont, NY 12009
(800) 221-1981

East Providence, RI

1 Noyes Avenue
Rumford, RI 02916
(800) 292-6766

Royalton, VT

5319 Route 14
South Royalton, VT 05068
(877) 347-1406

Bethpage, NY

999 South Oyster Bay Rd.
Bethpage, NY 11714
(800) 818-0434

Portland, ME

54 Milliken Street
Portland, ME 04103
(800) 547-3042

South Windsor, CT

1590 John Fitch Blvd.
South Windsor, CT 06074
(800) 877-2759

Carlstadt, NJ

75 Amor Avenue
Carlstadt, NJ 07072
(877) 672-3070

Rochester, NY

1671 Lyell Avenue
Rochester, NY 14606
(800) 801-9213

Woburn, MA

8 Roessler Road
Woburn, MA 01801
(800) 360-3923



Our Lumber Product Managers:

Joe Yvon
339.223.2025
jyvon@atlanticplywood.com

Roger Feltner
585.353.0146
rfeltner@atlanticplywood.com

Contact your Atlantic Plywood Inside Sales Representative for
currently available inventory today!